

NOTES - LTHW HEATING SYSTEMS

- THE CONTRACTOR SHALL ALLOW FOR THE FIXING, TAKING DOWN FOR DECORATION AND RE-FIXING OF ALL RADIATORS (WHERE APPLICABLE).
- ALL PIPEWORK SHALL BE FULLY INSULATED IN ACCORDANCE WITH THE TMSA BUILDING SERVICES COMPLIANCE GUIDE. INSULATION SHALL BE APPLIED TO ALL CONCEALED SERVICES (I.E. IN SERVICE VOIDS, OR BOXED IN) AND IN PLANTROOMS.
- THE INSULATION SHALL BE KINGSPAN KOOLTHERM OR EQUAL AND APPROVED.
- PRIOR TO THE APPLICATION OF INSULATION, ALL NEW LTHW PIPEWORK SHALL BE HYDRAULICALLY PRESSURE TESTED FOR NOT BE LESS THAN 30 MINUTES AT 3.0Barg.
- ALL RADIATORS SHALL BE PROVIDED WITH A TAMPERPROOF THERMOSTATIC RADIATOR VALVE (TRV) IN THE FLOW AND A LOCKSHIELD VALVE IN THE RETURN.
- ALL FINAL POSITIONS OF PLANT SHALL BE AGREED WITH THE ENGINEER PRIOR TO INSTALLATION.
- THE CONTRACTOR SHALL INCLUDE FOR MANUAL AIR VENTS AT HIGH POINTS AND DRAIN COCKS AT LOW POINTS WITHIN THE PIPE WORK.
- ALL PIPEWORK SHALL BE SUITABLE LABELLED WITH DIRECTIONAL ARROWS, COLOUR CODING AND TEST DESCRIPTIONS.
- UPON COMPLETION, THE CONTRACTOR SHALL CARRY OUT THE FOLLOWING ON THE LTHW SYSTEMS:
 - FILL AND VENT THE SYSTEM AND CARRY OUT A COLD FLUSH
 - DRAIN DOWN THE SYSTEM
 - FILL AND VENT THE SYSTEM AND CARRY OUT A HOT FLUSH
 - DRAIN DOWN THE SYSTEM
 - FILL AND VENT THE SYSTEM AND APPOINT A SPECIALIST CONTRACTOR TO ADD AN APPROPRIATE INHIBITOR TO THE CORRECT CONCENTRATION, SUITABLE FOR THE INSTALLED BOILERS.
- THE HEATING SYSTEM FLOW AND RETURN RETURN DESIGN WATER TEMPERATURES ARE 45/35.
- ANY PIPEWORK WITHIN PARTITION WALL BUILD-UP TO BE INSTALLED JOINT FREE WITH PULLED BENDS.

Rev	Amendment	Date	By
T1	TENDER ISSUE	09/09/22	CD

Meridian Trust

zeco
https://zecoenergy.com

Client: MERIDIAN ACADEMIES TRUST (CMAT)

Project Title: BAR HILL PRIMARY SCHOOL EXISTING LTHW HEATING SYSTEM SCHEMATIC

Drawn By: DWW
Checked By: CD
Approved By: GAC

Contract No: 22257
Date: 05.09.22
Scale: NTS

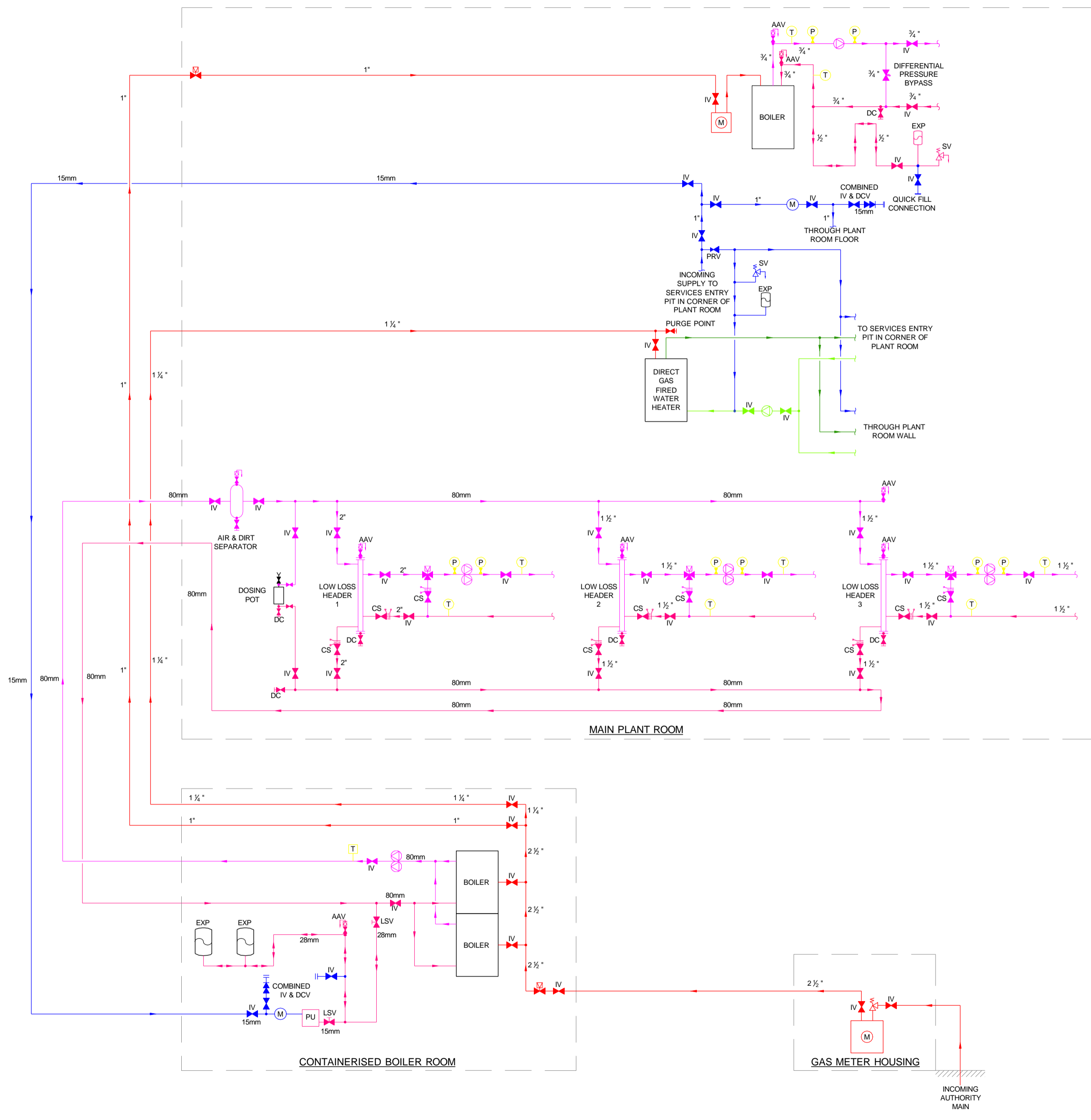
Status: TENDER

Drawing Number: T1
TE

- LEGEND**
- PIPEWORK BELOW GROUND
 - PIPEWORK AT LOW LEVEL
 - PIPEWORK AT HIGH LEVEL
 - PIPEWORK IN CEILING VOID
 - PIPEWORK RISES/ DROP
 - PIPEWORK RISES/ DROP C/W
 - ISOLATION VALVE (NORMALLY CLOSED)
 - ISOLATION VALVE
 - NON RETURN VALVE
 - DOUBLE REGULATING VALVE
 - 3-PORT CONTROL VALVE C/W ACTUATOR
 - 2-PORT CONTROL VALVE C/W ACTUATOR
 - DRAIN
 - COMMISSIONING SET WITH ORIFICE PLATE
 - THERMOSTATIC RADIATOR VALVE (TRV)
 - LOCKSHIELD VALVE
 - PRESSURE INDEPENDENT CONTROL VALVE
 - SAFETY VALVE AND DISCHARGE PIPE TO DRAIN
 - STRAINER
 - FLEXIBLE CONNECTION
 - ANCHOR POINT
 - EXPANSION BELLOW
 - EXPANSION GUIDE
 - PRESSURE GAUGE
 - TEMPERATURE GAUGE
 - TEMPERATURE SENSOR
 - PRESSURE SENSOR
 - DIFFERENTIAL PRESSURE SWITCH
 - METER
 - BMS LINK
 - SPACE CONTROLLER
 - LTHW RADIATOR
 - LOW SURFACE TEMPERATURE (LST) RADIATOR
 - ELECTRIC PANEL HEATER
 - LST ELECTRIC PANEL HEATER
 - DIRECTION OF AIR FLOW
 - ROOM HEATED BY INDIVIDUAL UNDERFLOOR ROOM HEATING CIRCUITS WITH LOCAL THERMOSTATIC CONTROL
 - RTHL RISE TO HIGH LEVEL
 - RTA RISE TO ABOVE
 - RFB RISE FROM BELOW
 - DTLL DROP TO LOW LEVEL
 - DFA DROP FROM ABOVE
 - DFB DROP TO BELOW
 - CV CEILING VOID
 - HL HIGH LEVEL
 - LL LOW LEVEL

DESIGNERS RISK ASSESSMENTS

RESIDUAL RISKS	ACTIONS
1. ALL SERVICES ARE TO BE INSTALLED AT HIGH LEVEL IN CEILING VOIDS LEADING TO POSSIBLE FALLS FROM HEIGHTS OR DROPPING OF HEAVY EQUIPMENT ONTO OTHERS.	USE SAFE WORKING PLATFORMS AND SAFE WORKING PRACTICES. ENSURE THAT PERSONNEL ARE EXCLUDED FROM THE VICINITY BY THE USE OF BARRIERS.
2. SITE DELIVERY OF MATERIALS NAD LARGER ITEMS OF PLANT, E.G. AHUS, DUCTWORK, PIPEWORK, HEAT EMITTERS AND AIR TERMINALS LEADING TO INJURY HAZARD.	ENSURE THAT A SAFE WORKING SCAFFOLD PLATFORM IS PROVIDED WITH NETTING TO PREVENT ACCIDENTAL DROPPING OF MATERIALS TO BELOW.
3. DUE TO THE AGE OF THE BUILDING, THE PRESENCE OF ASBESTOS CONTAINING MATERIALS IS A POSSIBILITY	REFER TO THE ASBESTOS REGISTER FOR THE BUILDING AND CARRYOUT A REFURBISHMENT / DEMOLITION SURVEY PRIOR TO COMMENCING ANY WORKS.



ARCHITECT'S DRAWING REFERENCE	REVISION
XXXXXXXXXX	XX